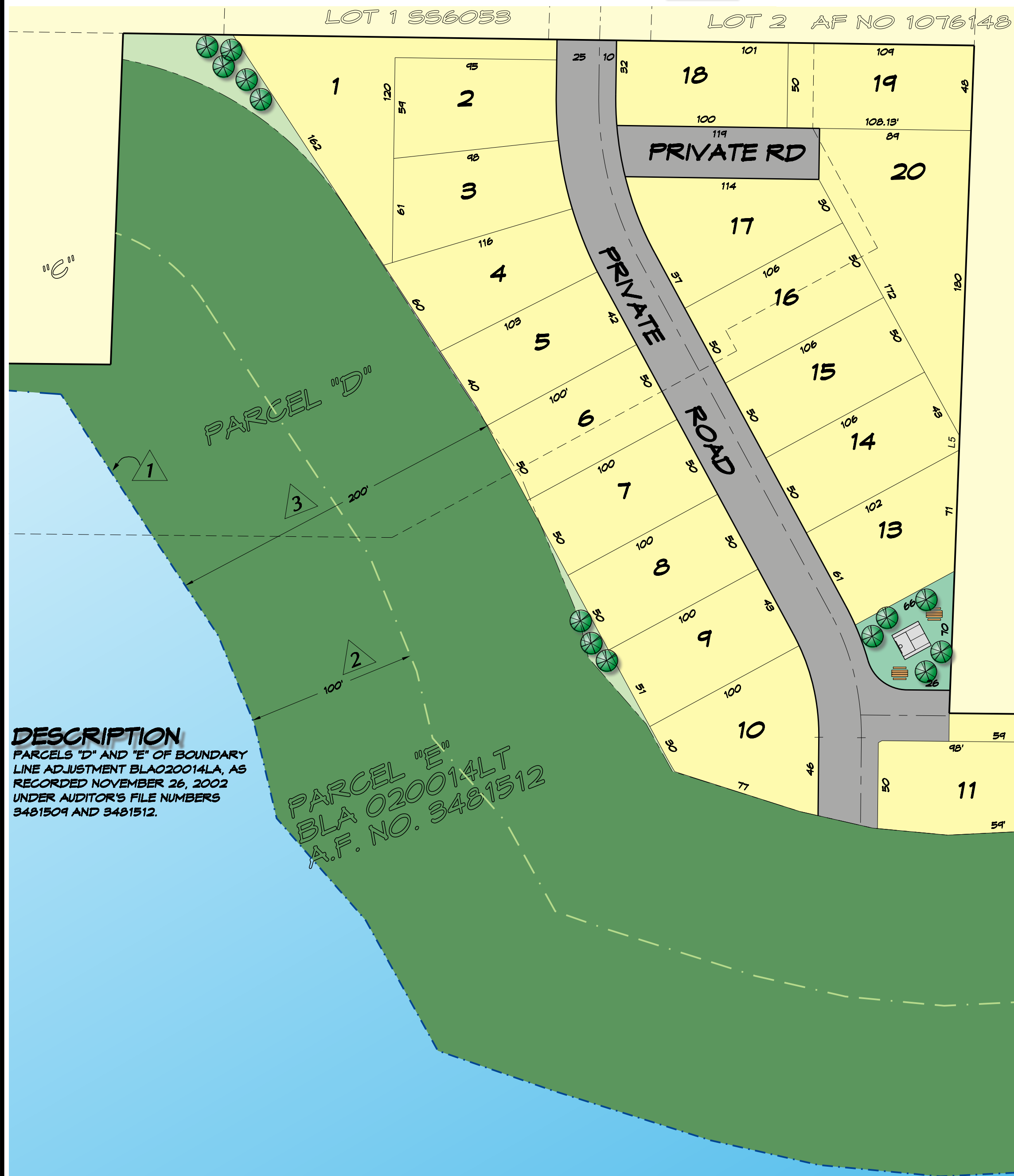
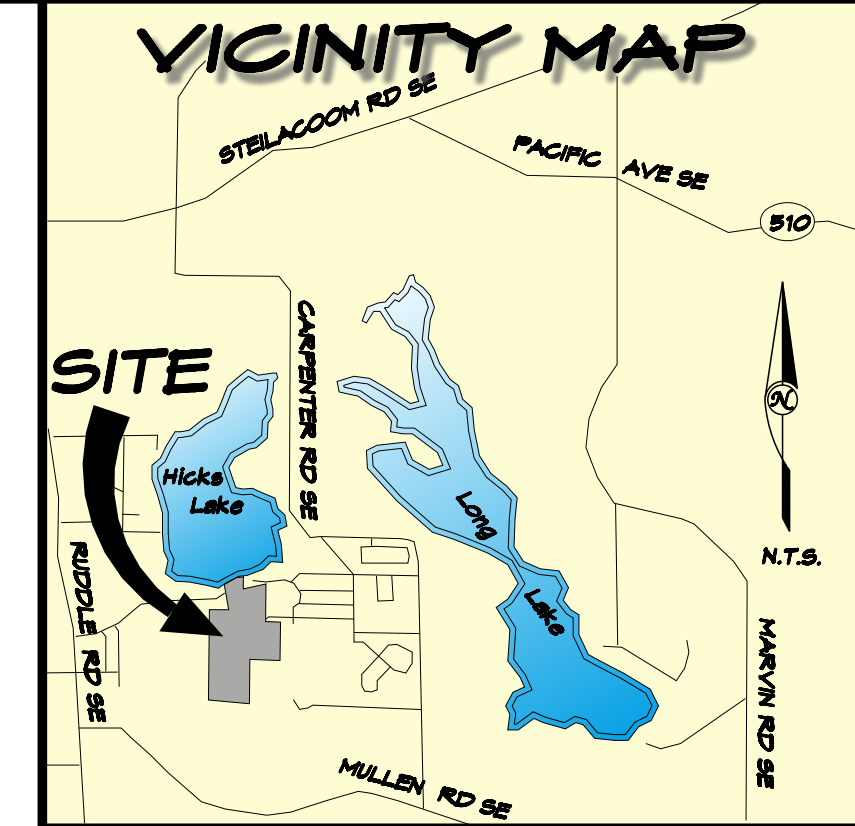


PRELIMINARY PLAT OF HICKS LAKE VIEW ESTATES
 (A LOW IMPACT DEVELOPMENT)
 A PORTION OF THE SW 1/4 OF SEC.27, TWP.18 N., RGE. 1 W., W.M.



LEGEND

- 1 EDGE OF WETLAND AS DELINEATED BY THE COOT COMPANY
- 2 LOW INTENSITY USE BUFFER
- 3 HIGH INTENSITY USE BUFFER
- 4 WETLAND EDGE ACCORDING TO COUNTY RECORDS

SITE DATA

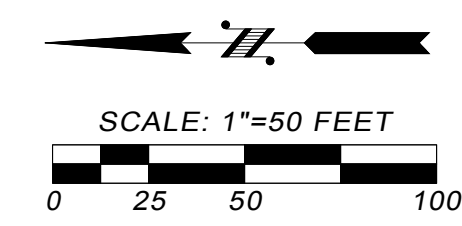
ASSESSOR PARCEL NO.'S	11827310201, 09450002000
ZONING	LD O-4
TOTAL AREA	23.96 ACRES
TOTAL LOTS	21
OPEN SPACE	19.86 ACRES
AREA OF "CRITICAL AREAS"	13.63 ACRES
AREA OF "CRITICAL AREA BUFFERS"	6.23 ACRES (26%)
AREA OF "UPLANDS"	3.70 ACRES
TOTAL DU ALLOWED	34 DU (3.70 X 4) + (6.23 X 3.2)
TOTAL DU PROPOSED	20 DU
MINIMUM DENSITY	7.09 DU/ACRE

DESCRIPTION
 PARCELS "D" AND "E" OF BOUNDARY LINE ADJUSTMENT BLA020014LA, AS RECORDED NOVEMBER 26, 2002 UNDER AUDITOR'S FILE NUMBERS 3481509 AND 3481512.

PARCEL "E"
 BLA 020014LT
 A.F. NO. 3481512

COLOR LEGEND

- PROPOSED RIGHT OF WAY
- SINGLE FAMILY RESIDENCE
- LANDSCAPING
- OPEN SPACE
- WETLAND
- NATURE PARK
- PICNIC TABLES
- TREES



HATTON GODAT PANTIER
 ENGINEERS AND SURVEYORS
 1840 BARNES BOULEVARD S W
 TUMWATER, WA 98512
 TEL: 360.943.1599 FAX: 360.357.6299
 hattonpantier.com 00249